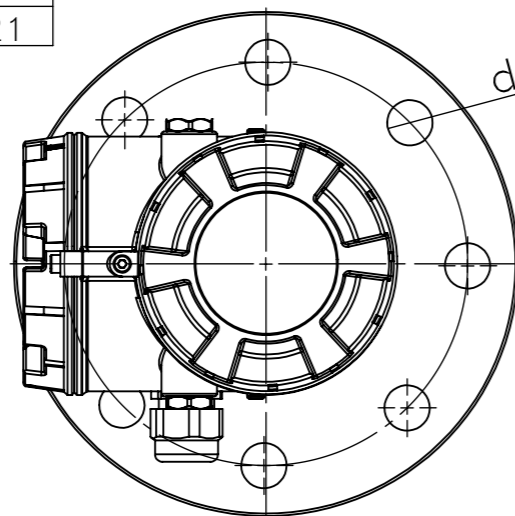


EX-Version

- 1 X nonreturn valve:
- thread G1/8
- opening pressure 0.5 bar
- sealing: Viton
- StSt 316 Ti
- for tube 6mm
- PN250

Antenna type	D1	H
DN50	48	126
DN80	78	228
DN100	98	288
DN100(lengthen)	98	473
DN125	123	621



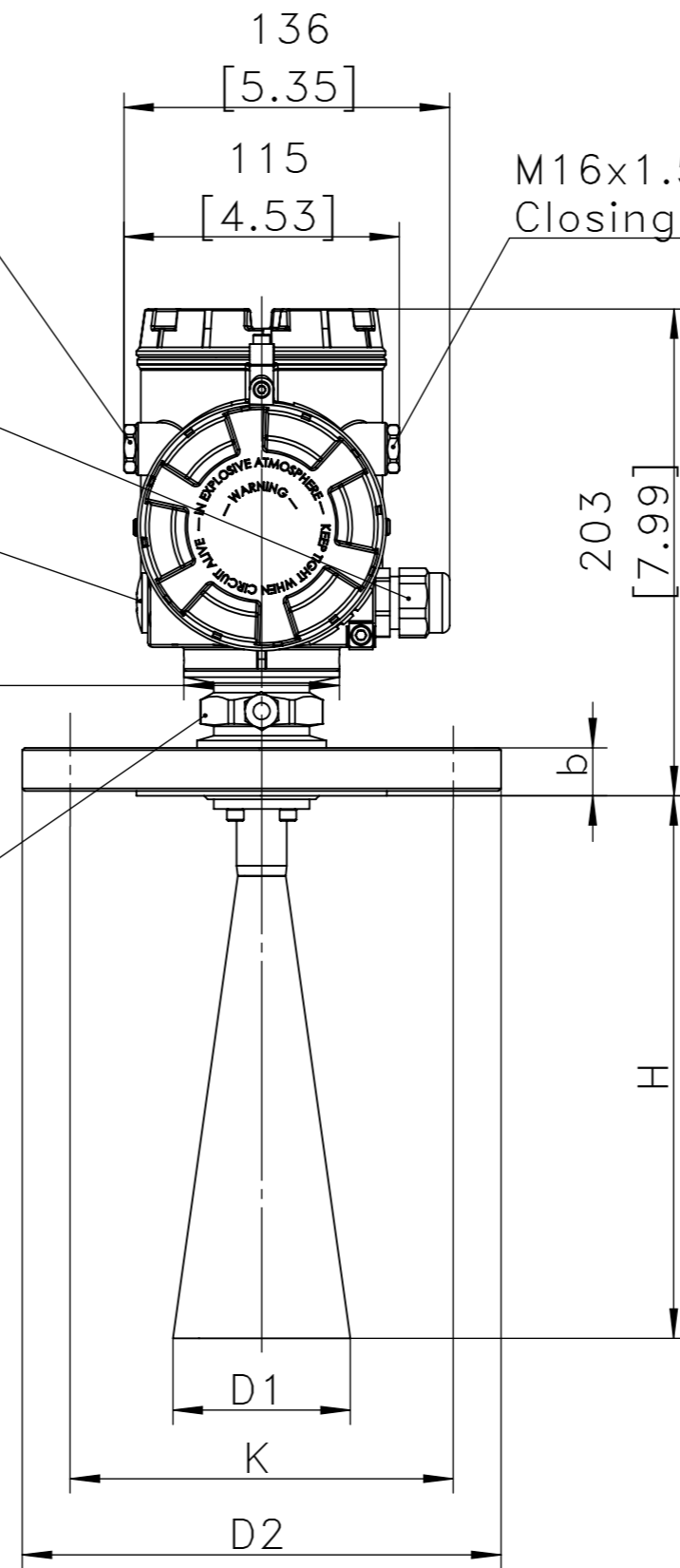
M16x1.5
Closing screw

M20x1.5
Cable gland

M20x1.5
Closing screw

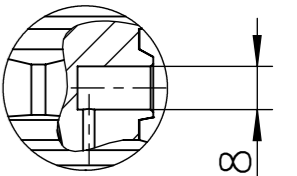
Ø 65
[2.56]

SW46



M16x1.5
Closing screw

1
2 : 3



G1/8

G1/8

37

[1.46]

NUM	DETAILS	DATE	CHECKED
03	CHANGE FINISH	24.12.2009	S.LYCETT
02	ADD EXTRA HOLES CHANGE RHS SIZE	21.11.2009	S.LYCETT
01	LENGTH 220MM WAS 203MM,SEE QY.-NO.0056	15.11.2009	S.LYCETT

UNLESS SPECIFIED OTHERWISE		DRAWN	S.LYCETT	04.11.2009
PRIMARY UNITS		CHECKED	R. SMITH	05.11.2009
MILLI METERS		M.E. APP'D	S.SEME	15.11.2009
SECONDARY		Q.A. APP'D	G.BUSH	16.11.2009
INCHES		DWG APPR.	A.GREEN	04.11.2009
REFERENCE IN PARENTHESES		ENG. REL. NO.	REF.	
GENERAL TOLERANCES		THIRD ANGLE PROJECTION		
1 DECIMAL PLACE ±0.15		DO NOT SCALE DRAWING		
2 DECIMAL PLACES ±0.15				
3 DECIMAL PLACES ±0.15				
ANGULAR DEGREES				

ROCKHILL AUTOMATION, INC.		DWG. NO.	0802-0100-01MMD180415210
www.rockhill.ca		CODE ID NO.	03554
ROHEVEL-PRT3206 Drawing		DWG. SIZE:	C
		SCALE:	1:3
		SHEET	1 OF 1